



## PROJECT PROFILE

## UNITED HEALTH SERVICES VESTAL EXTENSION CLINIC

**Structural Design  
Services:**  
*Klepper, Hahn & Hyatt*

**Owner:**  
*United Health Services*

**Completion Date:**  
*August 2012*



*UHS Vestal Extension Clinic - Vestal, New York*

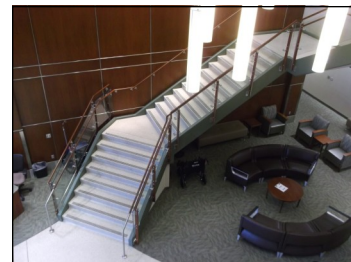
### SCOPE OF SERVICES

Klepper, Hahn & Hyatt provided structural engineering services for this 80,000-square-foot, free-standing clinic, which included three stories plus a penthouse. The building was framed with structural steel. The non-bearing, light gage, metal-framed exterior walls were clad with a combination of metal panels and brick.

As part of the United Health Services network, the new Walk-In Center was designed as an easy-access outpatient clinic which is open seven days per week. It houses the area's only comprehensive outpatient Imaging Center, which includes: radiology/x-ray; ultrasound; CT scanning; vascular ultrasound; and an MRI. The latter is a 3T magnet of 17,000 pounds which, when installed, was twice as strong as the current standard. This

enabled doctors to achieve a more detailed image in half the time.

Mammograms are also available through the UHS Breast Center, which is located in the building. Pharmacy services, pediatrics, and primary care (internal medicine, family medicine, and rheumatology) are also provided within the Walk-In Center. The UHS facility was designed with leasable space for group practices.



*Interior  
lobby and  
main  
stairway*